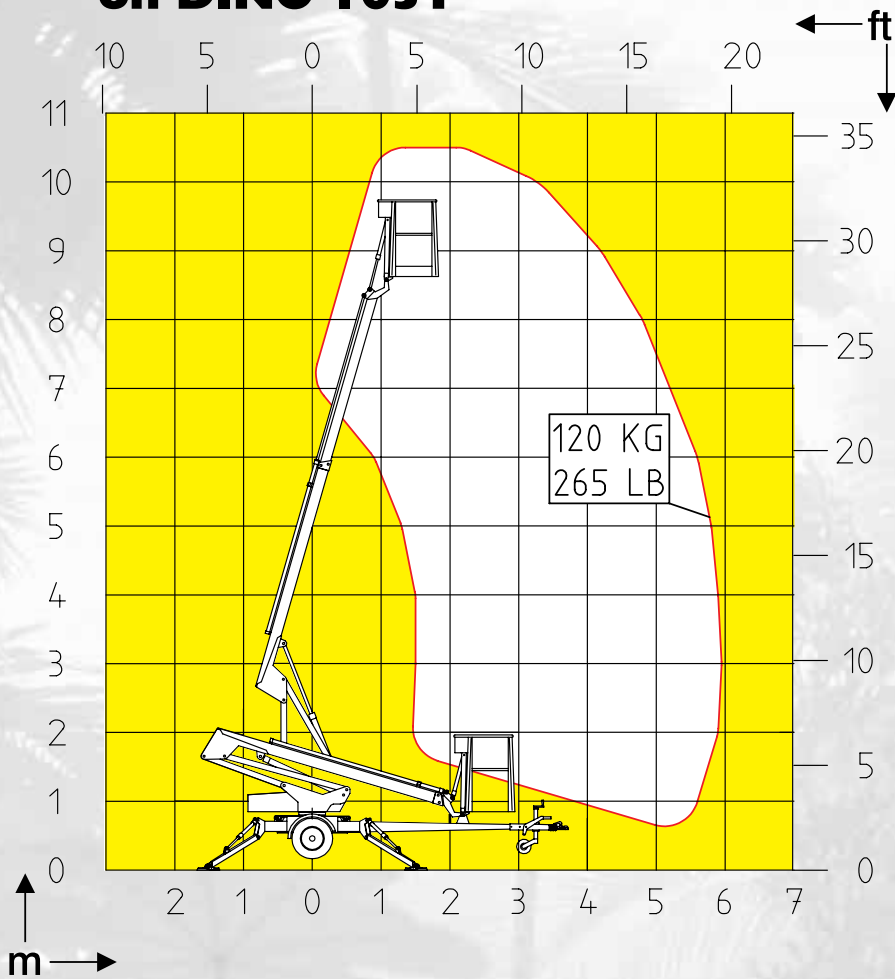


DINO[®] 105T

Compact – Efficient



Technical specification on DINO® I05T



Working height	10.5 m	34'5"
Platform height	8.5 m	27'10"
Horizontal reach	6.0 m	19'10"
Outrigger footprint – width	3.2 m	10'6"
Lift capacity	120 kg	265 lbs
Platform size	0.7 x 0.7 m	2'4" x 2'4"
Boom rotation	continuous	continuous
Boom control	2-speed	2-speed
Transport length	5.57 m	18'3"
Transport width	1.48 / 0.78 m	4'10" / 2'7"
Transport height	1.80 m	5'11"
Weight	1010 kg	2230 lbs
AC outlet in platform	standard	standard
Power source	110 VAC/230 VAC	110 VAC/230 VAC



DINO I05T features single door access.



Lightweight design allows towing by a variety of vehicles.



Aluminum platform offers easy to operate 2-speed control levers.

DINO® and Dino Lift® are trademarks registered by the company Dino Lift Oy.

The specification is subject to change without notice.